

New Jersey Semi-Conductor Products, Inc.

20 STERN AVE.
 SPRINGFIELD, NEW JERSEY 07081
 U.S.A.

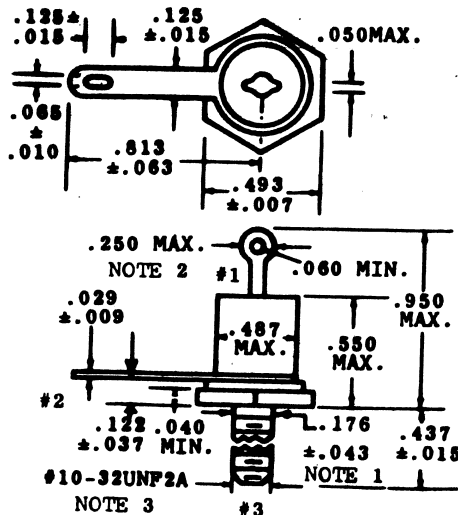
TELEPHONE: (973) 376-2922
 (212) 227-6005
 FAX: (973) 376-8960

D.A.T.A. /P/A/L/ (v4.2).

1 of 2071	Si Rectifiers, 5A < I(O)/I(F) ≤ 10A
-----------	-------------------------------------

Part Number: 1N2151A
 Description: Si Rectifiers, 5A < I(O)/I(F) ≤ 10A
 Manufacturer..... many
 Mil/High-Rel? (Y/N).....
 I(out) (If AVG) Max..... 6.0
 @Temp. (test) (°C)..... 150#
 VRRM..... 400
 1-Cycle Surge Current (A)..... 150
 Vf Max..... 1.0
 @If (test)..... 10
 @Temp. (test) for Vf)..... 25
 Ir @25°C..... 1.0u
 @Volts (test) (V)..... 400
 Ir @ Diff. Temp (A)..... .10m
 @Temp (test) (°C)..... 150
 Oper. Temp (°C) Max..... 150
 Pkg Style..... DO-10
 Surface Mounted (Y/N)..... N

Description: Si Rectifiers, 5A < I(O)/I(F) ≤ 10A
 Surface Mounted (Y/N)..... N



NOTES: (for DO10)

1. Complete threads to extend to within 2-1/2 threads of seating plane.
2. Angular orientation of terminals is undefined. Square or radius on ends of terminals is optional.
3. 10-32 UNF-2A. Maximum pitch diameter of plated threads shall be basic pitch diameter (.1697) reference (screw thread standards for federal services 1957(handbook H28 1957 P1).