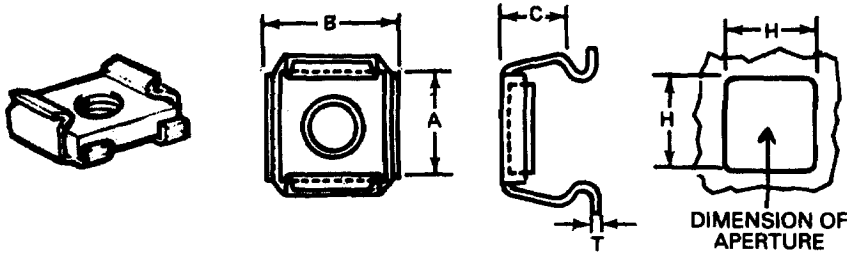
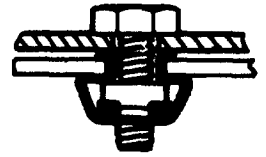


# CAGED NUTS



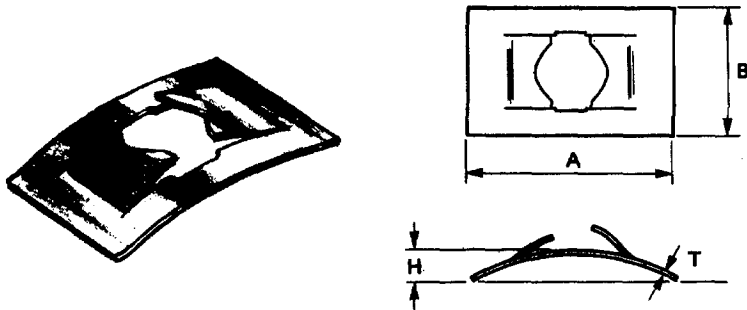
## APPLICATION



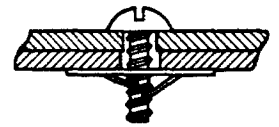
Suitable for Blind Locations. Eliminates Welding, Clinching and Staking. Standard Finish:— B and L

Part No.	Screw Size	A ins mm	B ins mm	C ins mm	T ins mm	H ins mm	Panel Range ins mm
L.S.409/10	0 BA	.560 14.22	.540 13.72	.240 6.10	.018 .457	.375 9.53	.028/.064 .710/1.63
L.S.409/11	0 BA	.560 14.22	.540 13.72	.240 6.10	.018 .457	.375 9.53	.072/1.104 1.83/2.64
L.S.409/12	M5	.560 14.22	.540 13.72	.240 6.10	.018 .457	.375 9.53	.028/.064 .710/1.63
L.S.409/13	M5	.560 14.22	.540 13.72	.240 6.10	.018 .457	.375 9.53	.072/1.104 1.83/2.64
L.S.409/14	M6	.560 14.22	.540 13.72	.240 6.10	.018 .457	.375 9.53	.028/.064 .710/1.63
L.S.409/15	M6	.560 14.22	.540 13.72	.240 6.10	.018 .457	.375 9.53	.072/1.104 1.83/2.64

# FLAT NUTS



## APPLICATION



Replaces threaded nuts and washers. For coarse and machine screw threads. Standard Finish:— B and L

Part No.	Screw Size	A ins mm	B ins mm	T ins mm	H ins mm
L.S.401/10	SNP 1212	No. 6 AB SMS 9/16 13.49	11/32 8.73	.022 .558	.080 2.03
L.S.401/11	SNP 0176	No. 8 AB SMS 5/8 15.08	3/8 9.53	.024 .610	.070 1.78
L.S.401/12	SNP 0177	No. 10 AB SMS 21/32 16.67	13/32 10.32	.028 .710	— —
L.S.401/14	SNP 1301	6 BA 11/32 8.74	15/64 5.95	.0108 .274	.015 .381
L.S.401/15	SNP 1302	4 BA 7/16 11.11	9/32 7.11	.0136 .345	.046 1.17
L.S.401/17	SNP 0164	2 BA 5/8 15.88	3/8 9.53	.0164 .419	.065 1.40
L.S.401/18	SNP 0170	3/16 BS 5/8 15.88	3/8 9.53	.022 .558	— —
L.S.401/19	SNP 0171	1/4 BSW 3/4 19.05	1/2 12.70	.024 .610	— —
L.S.401/21	SNP 1048	4 mm 9/16 14.29	11/32 8.73	.0164 .419	.062 1.57